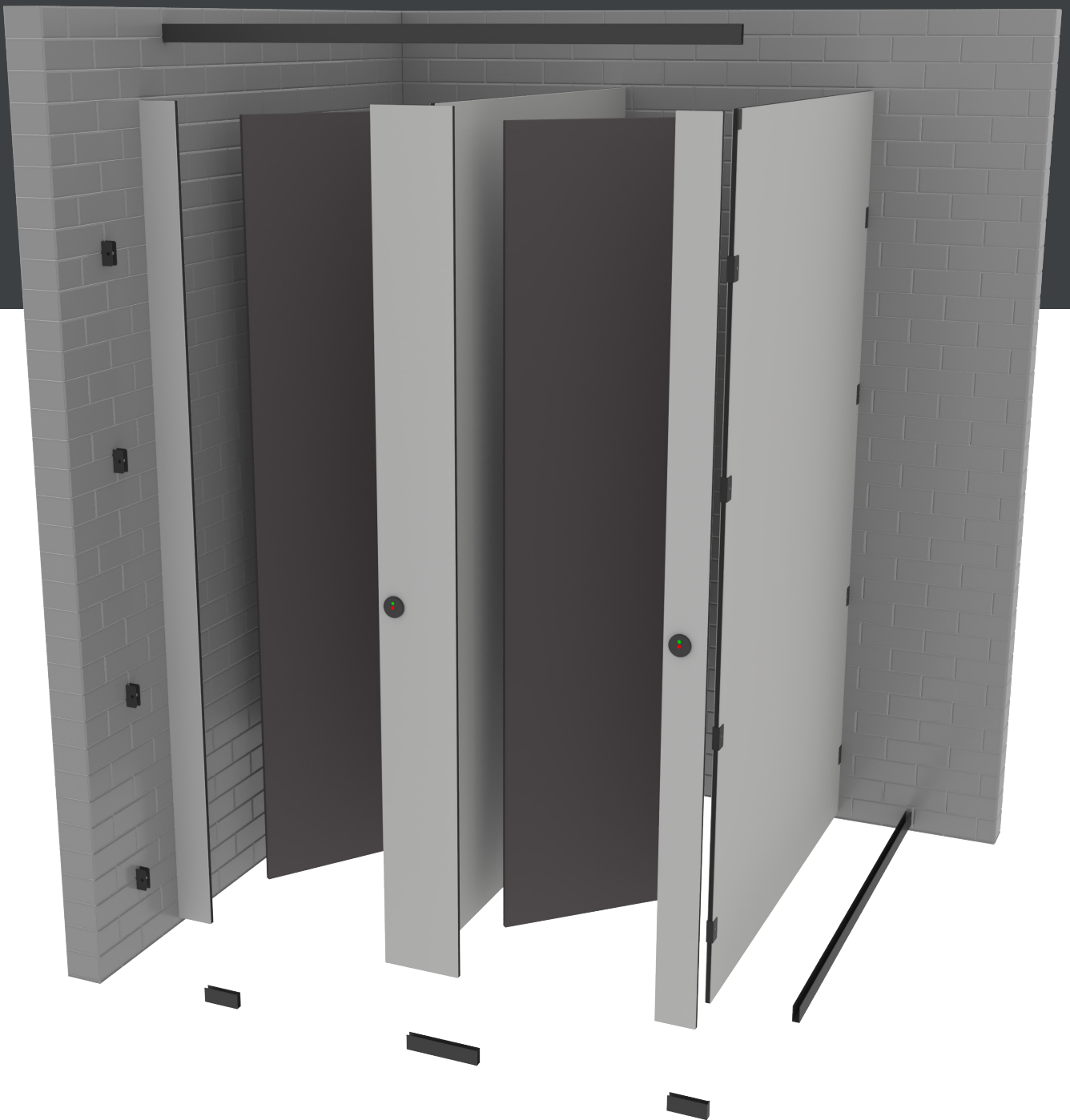




Cubicle Installation

Unisex Range



Cubicle Fittings



1B12 Indicator
Lock Latch



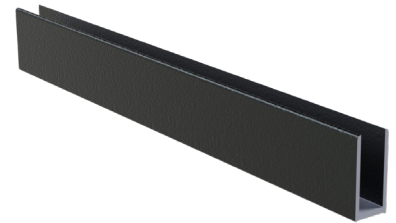
End Cap



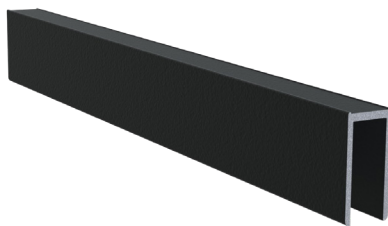
Compact Grade Bracket



HO5 Hinge



Floor Channel



HR3

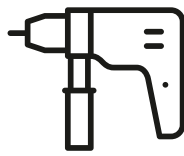


Coat Hook

Tools Required



Cordless Drill



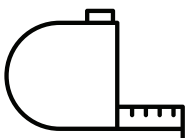
Hammer Drill



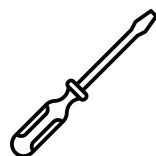
Circular Saw



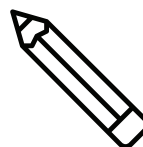
Spirit Level



Tape Measure



Screwdriver



Pencil



Allen Key Set

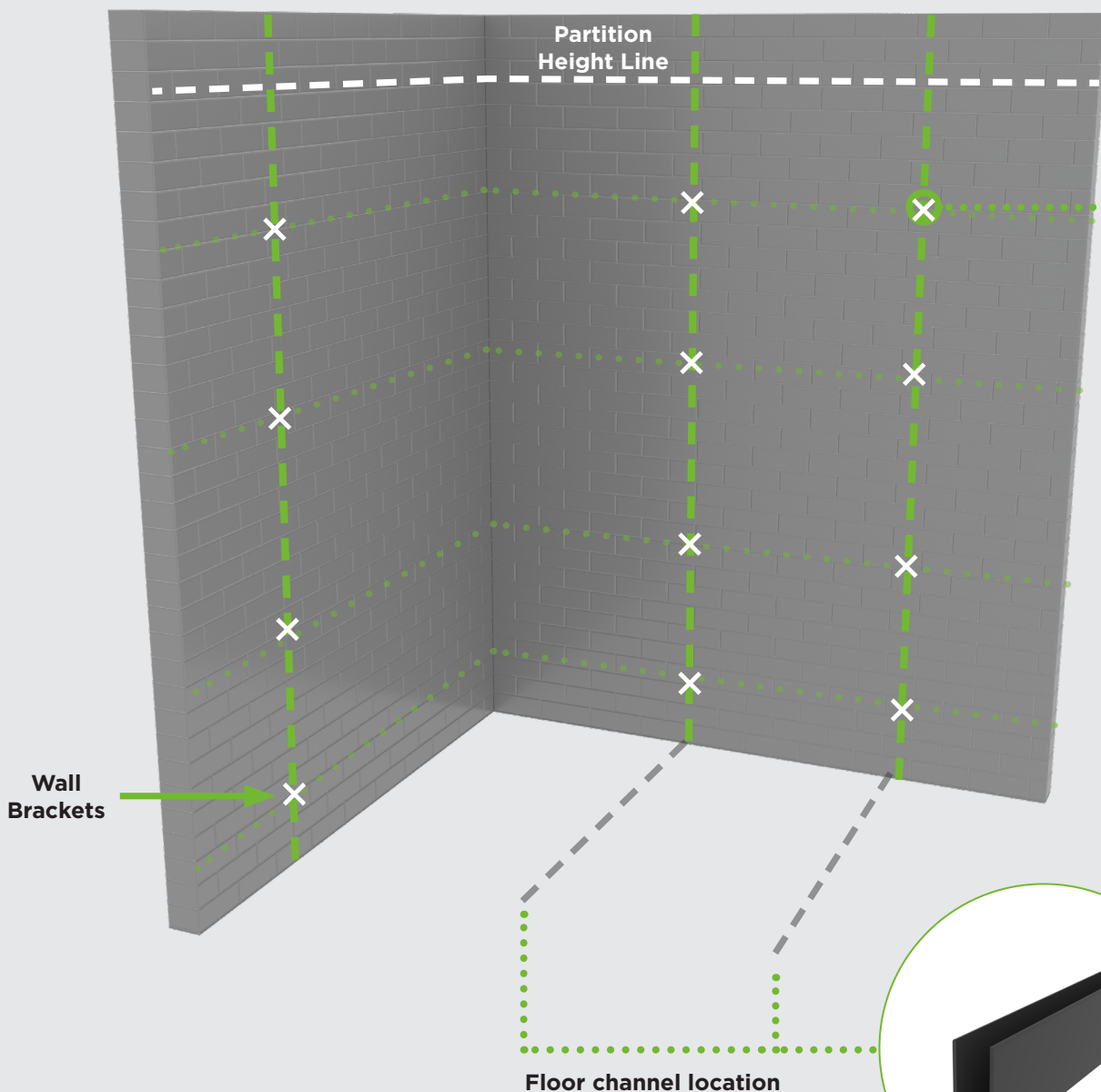
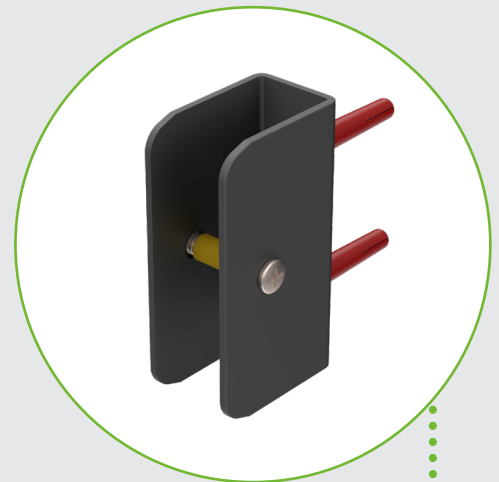


Hammer

Step 1

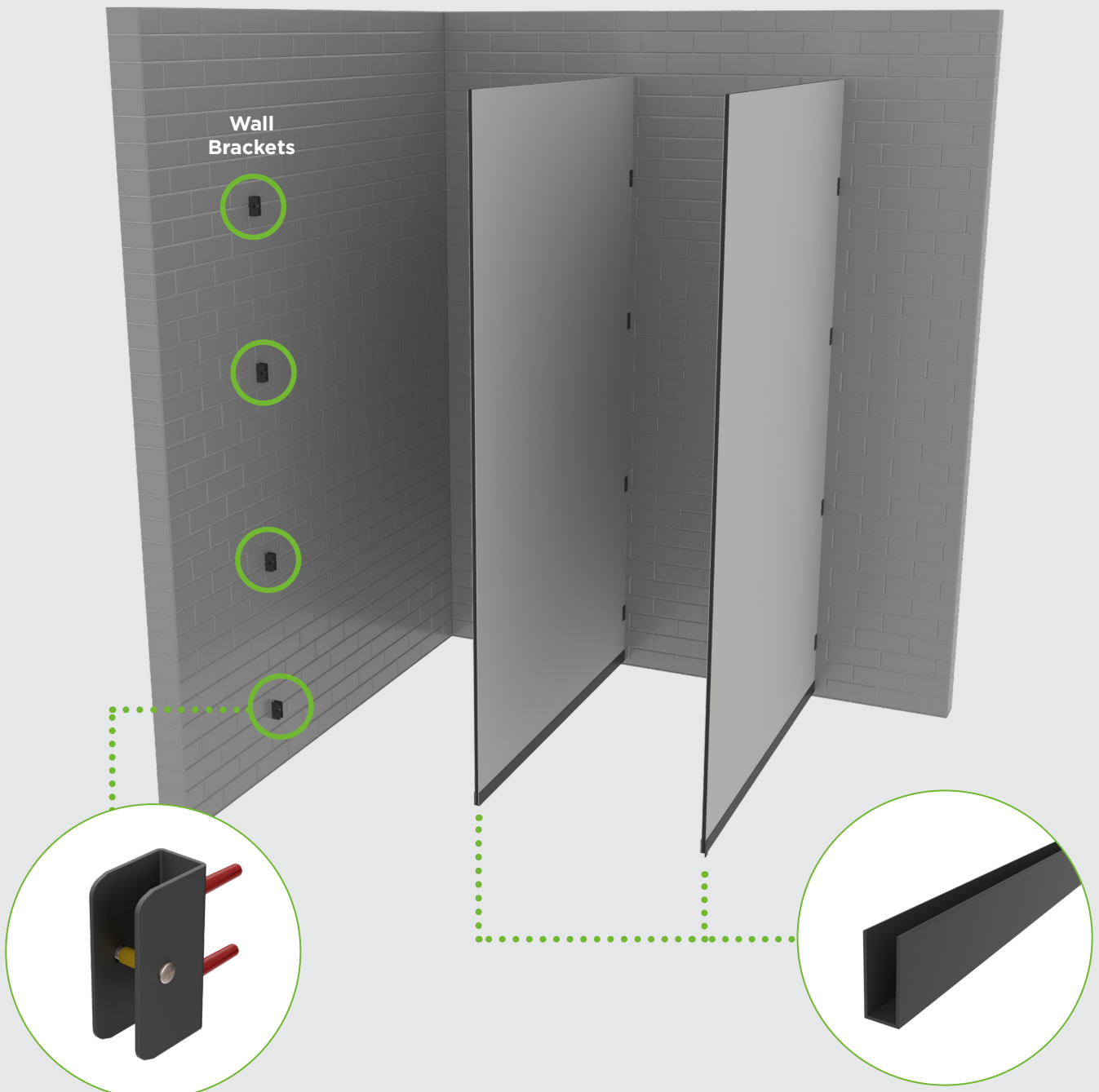
1. Measure and mark a vertical line on the rear wall for the partition positions.
2. Mark the wall equally to fix 4 x wall U brackets per partition and end wall pilasters.
3. Drill and secure u channel to the floor. Make sure the u channel is centralised to the centre of the wall brackets
4. When cutting the floor channel length make sure you cut channel 6mm bigger than the division depth. (i.e cubicle division depth 1500mm)

Cut floor channel 1506mm this will allow for the wall bracket thickness at either end.



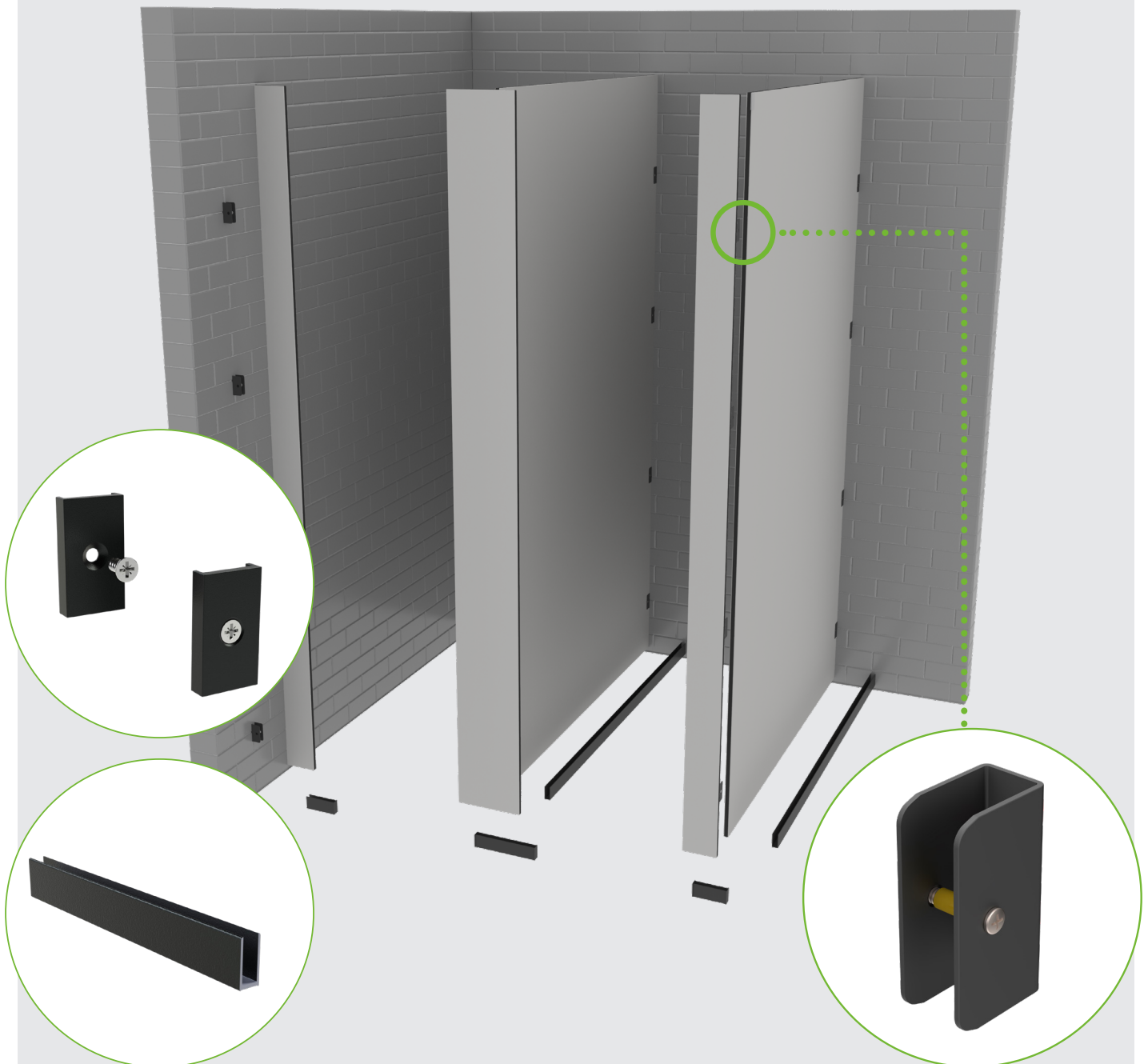
Step 2

1. Fix and secure 4 x U brackets for each partition on the vertical line you have marked on the back structural wall.
2. Fix and secure the floor u channel in place.
3. Insert the partition panel into the floor channel first, then slide back the partition into the wall brackets, securing the panel together with bolt through fixing provided.



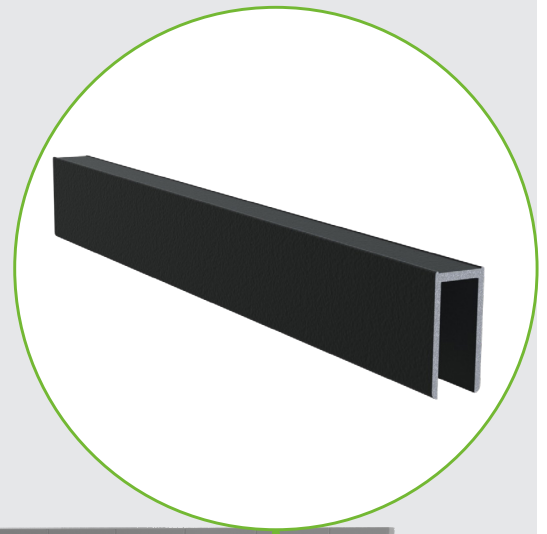
Step 3

1. Fix and secure the pilaster floor channels in position where the front pilasters are located.
2. All the pilaster floor channels are supplied cut to length, ready to fit.
3. Fix and secure the U brackets to the inside of the middle pilaster.
4. Place the middle pilaster into position into the floor channel, then secure the u bracket with fixings provided onto the partition.
5. Fix the bottom of the pilaster into the u channel with fixing providing, pilot drill a 3mm hole through the channel into the panel (don't drill all the way through)
6. Fix and secure floor channel end caps where required.
7. Corner pilasters – Fix the brackets onto the back side of the pilaster into the predrilled holes, The brackets should be flush with the edge of the panel.



Step 4

1. Mark and drill 2x pilot holes in top section of headrail to fix to each pilaster.
2. Drill and fix HR3 headrail down into the top of the front pilasters.



HR3 headrail



Step 5

1. When setting out front pilasters please make sure you follow the layout drawings for your cubicle set. (i.e., 650mm door - walk through clearance between pilasters 605mm)



Step 6

1. Install 1B12 Indicator lock.
2. **Inward opening doors**
The turn handle lock is fitted onto the pilaster with the arm locking onto the **DOOR**.
3. **Outward opening doors**
The turn handle lock is fitted onto the door with the arm locking onto the **PILASTER**.
4. Install the 1B12 indicator locks once the doors have been fitted.

